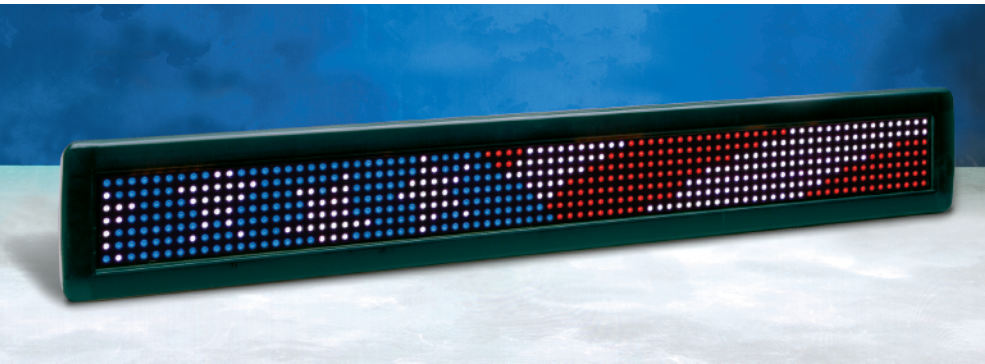


EA213 PRISM



ENTECH's PRISM® LED digital sign produces brilliant, full color messages that cannot be ignored.

- ▲ Create instant promotions to increase impulse purchases at the point-of-sale
- ▲ Advertise your daily specials, new products and services
- ▲ Announce upcoming events at a moment's notice
- ▲ Welcome VIPs, guests, or important customers with impact
- ▲ Promote employee safety, quality and health awareness programs

Within minutes you will be creating dynamic messages using the PRISM'S WYSIWYG software and your PC, or by using the infrared remote keyboard (software, USB/RS232 9-pin serial port cables and infrared keyboard included).

LED Full Color Digital Sign

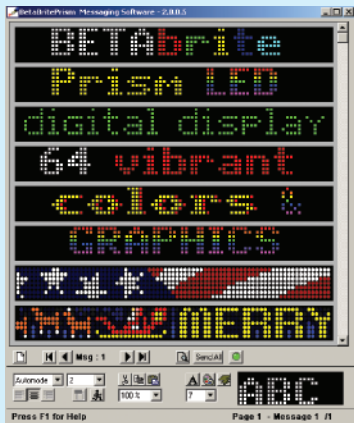
Features:

- ▲ USB/RS232 9-pin serial port cables included
- ▲ 64 vibrant LED colors for text and animated graphics
- ▲ Ultra-thin, easy-mount hi-tech case – less than one inch thick
- ▲ Impressive 2 inch tall letters visible indoor from 75 to 100 feet
- ▲ PC software included with WYSIWYG operation
- ▲ Simple 3-step infrared remote control keyboard
- ▲ One year limited factory warranty
- ▲ Unique graphics and animations



EA213 Prism Specifications

Case Dimensions:	25 7/8"L x 3 3/16"H x 9/10"D (65.7cm x 9.7cm x 2.3cm)	Keyboard:	Handheld infrared remote, 54 key universal layout
Display Dimensions:	24.0"L x 2.1"H (61cm x 5.3cm)	Built-in Animations:	Welcome, sale, news flash, happy 4th, open, closed, thank you, American flag, no smoking, don't drink & drive, fish swimming, fireworks, Christmas and smile
Display Weight:	1.5 lbs (.7kg) in-line AC adapter weighs 2.5 lbs (1.1kg)	Clock:	12 or 24 hour format
Display Array:	80 columns x 7 rows	Computer Interface:	USB or RS232 9-pin serial port
Memory:	16,000 characters	Power:	7.5 VDC at 2.9A, 50/60 HZ
Pixel Size (Diameter):	0.2" (0.51 cm)	Power Cord Length:	10 ft in-line adapter
Pixel (LED) Color:	Patented Prism 3-in-one RGB pixel	Case Material:	Injection molded plastic, black
Center-to-Center Pixel Spacing (Pitch):	0.3" (0.76 cm)	Limited Warranty:	One-year parts and labor, factory servicing
Character (font) Size:	2.1" tall 7 high font (65.3cm tall 7 high font)	Agency Apprvals:	North America: FCC Part 15 Class B, C-ETL-US listed to UL 60950-1 and CSA, 22.2 No. 60950-1, Europe: CISPR 22 Class B, EN 60950-1
Character (font) Array:	5 x 7 or 5 x 5 matrix	Operating Temperature:	32° to 113°F, (0° to 45°C)
Character Sets (fonts):	12 sets: block (sans serif), decorative (serif), upper/lower case, slim/wide, 5 and 7 row high	Humidity Range:	0% to 95% non-condensing
Memory Retention:	One month typical without power	Mounting:	Surface (counter), wall and ceiling brackets, also through-panel mounting
Message Capacity:	65 different messages can be stored and displayed (or date scheduled)		
Message Display Modes:	26 consisting of: Automode, hold, (6 directions), rotate, compressed rotate, wipe (6 directions), starburst, flash, snow and cycle colors		



Included with the Prism

- ▲ Prism software to easily create, store, manage, messages
- ▲ A simple, 3-step, handheld infrared remote control keyboard
- ▲ USB and RS232 9-pin serial port PC cables

ENTECH SIGNS LLC - ALPHA LED

1905 WEST ARBOR ROSE
GRAND PRAIRIE, TX 75050
972-641-0390
WWW.ALPHA-LED.COM
WWW.LEDTICKER.COM